

**ALI MARIE BURNS**

**PORTFOLIO**

**-ARCHITECTURAL DESIGNER, BIM CO-ORDINATOR, DRAFTER-**



**PROJECT: ASCHEIM RESIDENCE (PRIVATE RESIDENCE)  
FOR DAVIS ARCHITECTURE STUDIO**

**LOCATION: TALMADGE STREET, LOS ANGELES, CA 90027**

The project is a 4 bed, 3 bath, pfamily residence in the luxurious Franklin Hills area of Los Angeles. Perched on a Hill, this high-end home hosts three outdoor terraces and rear swimming pool, with opulent barrel ceilings and a spanish aesthetic to nestle with sweeping views. Fresh & bright, the entire home boasts designer finishes from the kitchen to the bathrooms to ensure the highest luxury for our clients, with 360 views of LA.

**ROLE: ARCHITECTURAL DESIGNER, DRAFTER, PROJECT MANAGER**

- Developed architectural and interior designs from concept, schematic design, and design development through construction documentation
- Produced site plans, floor plans, sections, elevations, and details
- Integrated client program requirements into functional, code-compliant designs, technical documentation & construction
- Produced permit and construction drawing sets, construction details and schedules
- Managed shop drawings, submittals and RFIs
- Created presentation packages including mood boards, material boards, and renderings.
- Selected finishes, materials, fixtures, and furnishings (FF&E) aligned with client budgets and brand standards.
- Produced and coordinated custom millwork and cabinetry design and detailing.



**PROJECT: CHEE RESIDENCE (APARTMENT RENOVATION & EXPANSION)  
FOR DAVIS ARCHITECTURE STUDIO**

**LOCATION: SOHO, NEW YORK**

Davis Architecture Studio were hired to renovate this luxury pre-war penthouse in the heart of Greenwich Village. Featuring three bedrooms and two baths, this renovation featured 19' ceilings in the living area with a large open kitchen, perfect for hosting. The design of this renovation includes introducing a roof renovation with 360 views of New York City to create a full luxury experience.

**ROLE: ARCHITECTURAL DESIGNER, DRAFTER, PROJECT MANAGER**

- Developed architectural and interior designs from concept, schematic design, and design development through construction documentation
- Produced site plans, floor plans, sections, elevations, and details
- Integrated client program requirements into functional, code-compliant designs, technical documentation & construction
- Produced permit and construction drawing sets, construction details and schedules
- Managed shop drawings, submittals and RFIs
- Created presentation packages including mood boards, material boards, and renderings.
- Selected finishes, materials, fixtures, and furnishings (FF&E) aligned with client budgets and brand standards.
- Produced and coordinated custom millwork and cabinetry design and detailing.
- Conducted site visits and punch lists



## **PROJECT: OKAN TOWER (LUXURY SKYSCRAPER)**

### **FOR MOORE GROUP CONSTRUCTION COMPANY**

#### **LOCATION: MIAMI, FLORIDA**

The project consists of a 70 story tower with 153 Residential Condominium Units, 236 Condo-Hotel Units, 294 Room Full-Service Hotel with extensive amenities and 90,000 square feet of office and meeting room space. Located west of Biscayne Boulevard, “Okan Tower” is on an axis with Miami’s iconic Freedom Tower and the Port of Miami. From the water, its location and height allow it to serve as a vertical “Urban Marker” to the Miami skyline.

#### **ROLE: LEAD BIM CO-ORDINATOR, ARCHITECTURAL CONSULTANT**

- Generated detailed 3D models and visualization videos using 3D softwares for comprehensive bidding processes and stakeholder presentations, ensuring visual accuracy for cost estimation and project understanding.
- Implemented mobile BIM solutions, configuring optimized Revit models into SketchUp for easy-to-use 3D models for site workers on their mobile devices and iPads.
- Orchestrated BIM coordination meetings with Architects, Developers, and Structural/MEP Engineers, facilitating model exchanges and BIM Execution Plans
- Performed clash detection analyses on structural models, identifying and resolving interdisciplinary conflicts (structural, MEP, architectural) to preempt construction delays and optimize sequencing.
- Train and support project teams on BIM workflows, 3D best practices, and model use in the field.
- Authored full sets of construction documents, including plans, sections, elevations, 3D models and structural details. Created coordination views/sections and 3D views for constructability and field use.



**PROJECT: UNA RESIDENCE (LUXURY SKYSCRAPER)**

**FOR MOORE GROUP CONSTRUCTION COMPANY**

**LOCATION: MIAMI, FLORIDA**

Inspired by classic yacht design, Una Residences embodies the spirit of Miami with skyscraper views and waterfront surroundings. The 680,000 square foot superstructure with a three-level subterranean basement will become Miami's deepest underground garage with 47 stories and a height of 565 feet above grade. The design offers 135 luxury condominium residences with floor-to-ceiling glass, exterior terraces, and an array of amenities including three pools and private boat slips.

**ROLE: LEAD BIM CO-ORDINATOR, ARCHITECTURAL CONSULTANT**

- Generated detailed 3D models and visualization videos using 3D softwares for comprehensive bidding processes and stakeholder presentations, ensuring visual accuracy for cost estimation and project understanding.
- Implemented mobile BIM solutions, configuring optimized Revit models into SketchUp for easy-to-use 3D models for site workers on their mobile devices and iPads.
- Orchestrated BIM coordination meetings with Architects, Developers, and Structural/MEP Engineers, facilitating model exchanges and BIM Execution Plans
- Performed clash detection analyses on structural models, identifying and resolving interdisciplinary conflicts (structural, MEP, architectural) to preempt construction delays and optimize sequencing.
- Train and support project teams on BIM workflows, 3D best practices, and model use in the field.
- Authored full sets of construction documents, including plans, sections, elevations, 3D models and structural details. Created coordination views/sections and 3D views for constructability and field use.



**PROJECT: UNA RESIDENCE (MIXED USE CONDOMINIUMS & COMMERCIAL)  
FOR MOORE GROUP CONSTRUCTION COMPANY**

**LOCATION: BAY HARBOR ISLANDS, FLORIDA**

Kane Concourse is a mixed-use project consisting of 9-Stories with 54-high-end luxury condominiums. 155,966 GSF residential space with 21,736 GSF Terraces, 198,237 GSF Parking totaling 514-Spaces and 118,239 GSF Office/Commercial-Retail Space in a “U”- shape design creating an open-air, outdoor courtyard and communal lounge area as seen here. This mid-rise structure comprises an exterior glass & aluminum façade with glass & aluminum terrace balcony enclosures, a Rooftop Pool Deck and Recreation Terrace, Integrated Wellness Amenities, Retail, and Food & Beverage Space

**ROLE: LEAD BIM CO-ORDINATOR, ARCHITECTURAL CONSULTANT**

- Generated detailed 3D models and visualization videos using 3D softwares for comprehensive bidding processes and stakeholder presentations, ensuring visual accuracy for cost estimation and project understanding.
- Implemented mobile BIM solutions, configuring optimized Revit models into SketchUp for easy-to-use 3D models for site workers on their mobile devices and iPads.
- Orchestrated BIM coordination meetings with Architects, Developers, and Structural/MEP Engineers, facilitating model exchanges and BIM Execution Plans
- Performed clash detection analyses on structural models, identifying and resolving interdisciplinary conflicts (structural, MEP, architectural) to preempt construction delays and optimize sequencing.
- Train and support project teams on BIM workflows, 3D best practices, and model use in the field.
- Authored full sets of construction documents, including plans, sections, elevations, 3D models and structural details. Created coordination views/sections and 3D views for constructability and field use.



**PROJECT: FORDHAM LANDING (MIXED USE RESIDENTIAL & COMMERCIAL)  
FOR MOORE GROUP CONSTRUCTION COMPANY**

**LOCATION: BRONX, NEW YORK**

The proposed development spreads across 30 acres on the Harlem River Waterfront and include half a million square feet of office space and 100,000 square feet of community.

Originally planned as a 2,800 residential unit development that would include a hotel and an upgraded Metro North Station at Universit Heights, the project has been scaled down to 2,400 units and a price tag of \$2 billion rather than the original \$3.5 billion original estimate.

**ROLE: LEAD BIM CO-ORDINATOR, ARCHITECTURAL CONSULTANT**

- Generated detailed 3D models and visualization videos using 3D softwares for comprehensive bidding processes and stakeholder presentations, ensuring visual accuracy for cost estimation and project understanding.
- Implemented mobile BIM solutions, configuring optimized Revit models into SketchUp for easy-to-use 3D models for site workers on their mobile devices and iPads.
- Orchestrated BIM coordination meetings with Architects, Developers, and Structural/MEP Engineers, facilitating model exchanges and BIM Execution Plans
- Performed clash detection analyses on structural models, identifying and resolving interdisciplinary conflicts (structural, MEP, architectural) to preempt construction delays and optimize sequencing.
- Train and support project teams on BIM workflows, 3D best practices, and model use in the field.
- Authored full sets of construction documents, including plans, sections, elevations, 3D models and structural details. Created coordination views/sections and 3D views for constructability and field use.



**PROJECT: SURFSIDE RESIDENCE (PRIVATE FAMILY RESIDENCE)  
FOR PLATT DANA ARCHITECTS**

**LOCATION: SOUTHAMPTON, NEW YORK**

Located in the beach area of Southampton, New York. This house was purchased as a five bed, three bath summer residence for Platt Dana repeat clients. The building is to be knocked and a new seven bed, six bath design is to be constructed on the site with a built in pool, pool house, tennis court and basketball court. The pinwheel design of the new residence inspires 'indoor-outdoor' living and a wrapping balcony on the second floor receives sunlight from east to west throughout the day.

**ROLE: ARCHITECTURAL DESIGNER, HEAD OF 3D MODELLING**

- Developed architectural and interior designs from concept, schematic design, and design development through construction documentation
- Produced site plans, floor plans, sections, elevations, and details
- Integrated client program requirements into functional, code-compliant designs, technical documentation & construction
- Produced permit and construction drawing sets, construction details and schedules
- Managed shop drawings, submittals and RFIs
- Created presentation packages including mood boards, material boards, and renderings.
- Selected finishes, materials, fixtures, and furnishings (FF&E) aligned with client budgets and brand standards.
- Produced and coordinated custom millwork and cabinetry design and detailing.
- Conducted site visits and punch lists



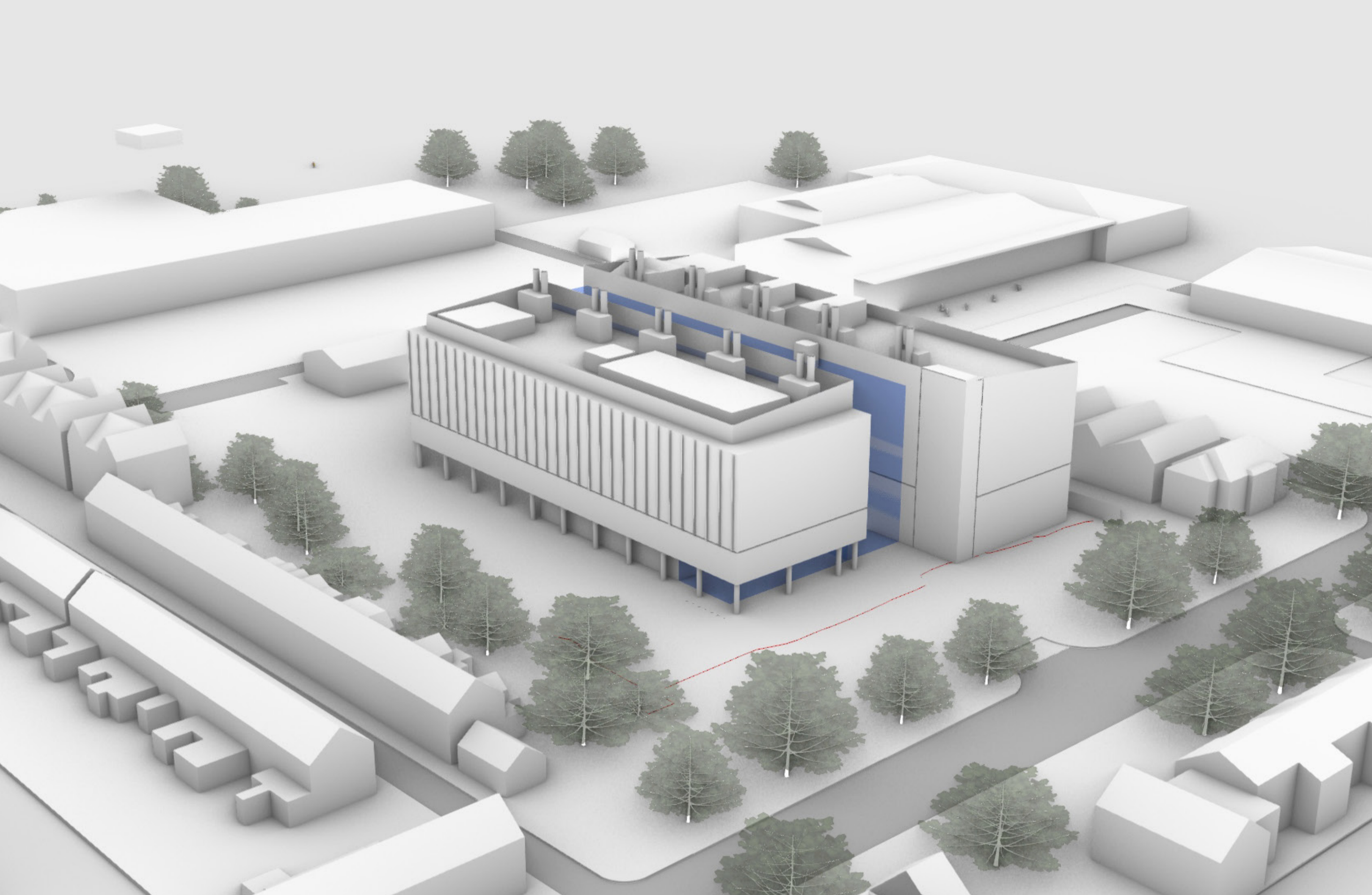
**PROJECT: RIVERSIDE DRIVE APARTMENT (APARTMENT RENOVATION)  
FOR PLATT DANA ARCHITECTS**

**LOCATION: UPPER WEST SIDE, NEW YORK**

Platt Dana Architects were hired to merge two adjacent apartments in the same building to create a four bedroom, four bath apartment unit in the upper west side. Designed in a Neo-Renaissance architectural style with a rusticated limestone base and rhythmic facade of bay windows, 190 Riverside Drive was constructed in 1908 and was purchased in 1996 at which point it was renovated and converted to a condominium. The new apartment design by Platt Dana Architects merges two adjacent apartments to the original pre-war size of 3,300 SF to create a modern apartment with breathtaking views of the western park and river.

**ROLE: ARCHITECTURAL DESIGNER, HEAD OF 3D MODELLING**

- Developed architectural and interior designs from concept, schematic design, and design development through construction documentation
- Produced site plans, floor plans, sections, elevations, and details
- Integrated client program requirements into functional, code-compliant designs, technical documentation & construction
- Produced permit and construction drawing sets, construction details and schedules
- Managed shop drawings, submittals and RFIs
- Created presentation packages including mood boards, material boards, and renderings.
- Selected finishes, materials, fixtures, and furnishings (FF&E) aligned with client budgets and brand standards.
- Produced and coordinated custom millwork and cabinetry design and detailing.
- Conducted site visits and punch lists



**PROJECT: SPIRES II OXFORD  
FOR NBBJ ARCHITECTS**

**LOCATION: OXFORD, UNITED KINGDOM**

Significantly contributing to the public realm of Oxford, NBBJ designed a building that invites people in via a new plaza, allowing views into and across the ground floor. The plaza provides space for events and separates the large building into two smaller volumes in keeping with the local context. Amenities involved in the design include: laboratories and testing spaces, archives and research spaces, offices, conference rooms, teaching laboratories, unallocated space for future expansion, study and social space, cafe, exhibition space and public plaza.

**ROLE: PART II ARCHITECT, PROJECT ENVIRONMENTAL ADVOCATE**

- Developed architectural designs through 3D models
- Utilized computational design workflows (Grasshopper for Rhino) to generate 3D viewing cones for conservation impact assessments integrating with Revit and SketchUp models for satellite campus expansion and detailed urban design analysis
- Served as Sustainability Champion, integrating BREEAM sustainability targets and performance metrics into the design and construction phases, ensuring compliance and optimizing environmental performance of projects
- Developed high-quality competition boards and visual collateral for the London studio, strategically aiding in international design bids and critical project acquisition efforts